

COULEURS DES PROPRIETAIRES

Les couleurs d'un propriétaire résultent de la combinaison des éléments suivants :

- A - Coloris autorisés.
- B - Dispositifs du corps de la casaque.
- C - Dispositifs des manches.
- D - Dispositifs de la toque.

A. Coloris autorisés. (voir annexe A)

Les coloris autorisés sont les suivants :

1. Blanc - 2. Gris - 3. Rose - 4. Rouge - 5. Grenat - 6. Orange - 7. Jaune - 8. Vert-clair - 9. Vert - 10. Gros vert - 11. Bleu-clair - 12. Bleu - 13. Gros bleu - 14. Mauve - 15. Violet - 16. Beige - 17. Marron - 18. Noir.

B. Dispositifs du corps de la casaque.

Les dispositifs autorisés sont les suivants :

1. Bande - 2. Bretelles - 3. Ceinture - 4. Cerclée - 5. Chevron V (pointe en bas) - 6. Chevronnée (pointe en haut) - 7. Coutures - 8. Croix de Saint-André - 9. Croix de Lorraine - 10. Damier - 11. Losange - 12. Losanges - 13. Ecartelée - 14. Epaulettes - 15. Etoile - 16. Etoiles - 17. Pois - 18. Rayée - 19. Disque - 20. Diabolo - 21. Triangle (pointe en bas) - 22. Trois pois (en diagonale) - 23. Trois losanges (horizontaux) - 24. Cadre.

Le devant et l'arrière de la casaque doivent présenter le même dispositif.

C. Dispositifs des manches.

Les dispositifs autorisés sont les suivants :

1. Unies - 2. Brassards - 3. Cerclées - 4. Coutures - 5. Etoiles - 6. Pois - 7. Rayées - 8. Chevronnées - 9. Damier - 10. Losanges - 11. Diabolo - 12. Mi. Les deux manches doivent être obligatoirement identiques.

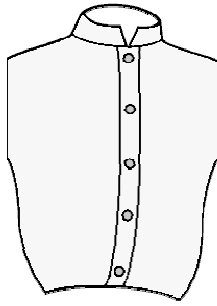
D. Dispositifs de la toque.

Les dispositifs autorisés sont les suivants :

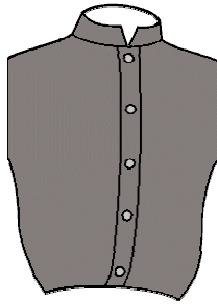
1. Unie - 2. Cerclée - 3. Rayée - 4. Damier - 5. Pois - 6. Ecartelée - 7. Etoiles - 8. Losanges - 9. Etoile - 10. Losange.

Les trois éléments, casaque, manches et toque, doivent se décrire dans cet ordre et se composer de deux coloris, exceptionnellement de trois.

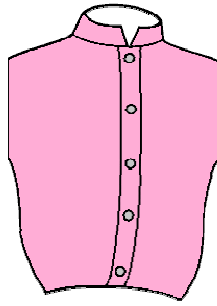
Couleurs - Kleuren



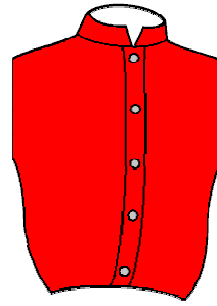
Blanc



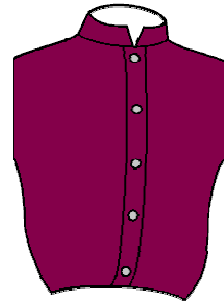
Gris



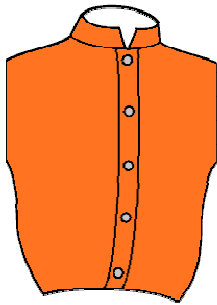
Rose



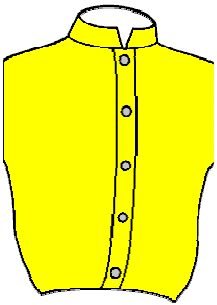
Rouge



Grenat



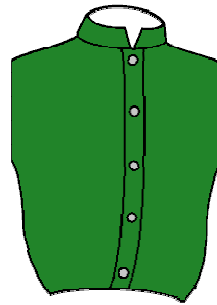
Orange



Jaune



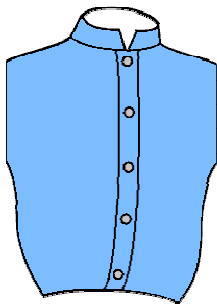
Vert Clair



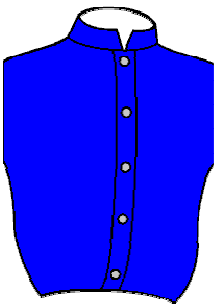
Vert



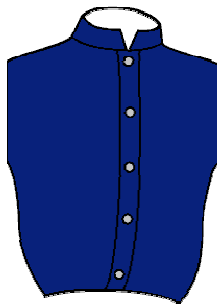
Gros Vert



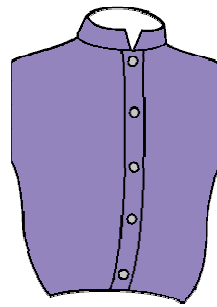
Bleu Clair



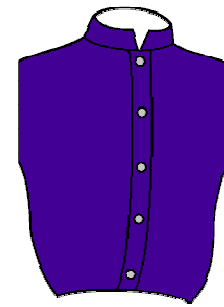
Bleu



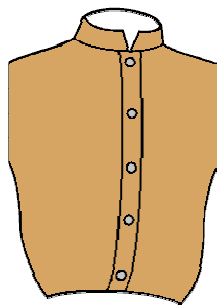
Gros Bleu



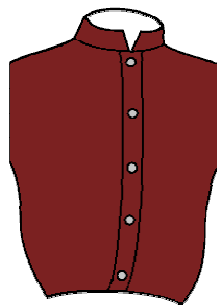
Mauve



Violet



Beige

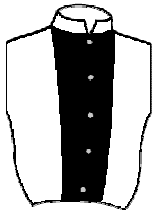


Maron

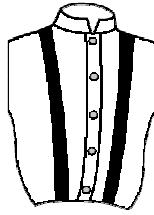


Noir

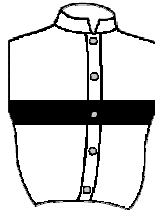
Dispositif casaque – Dispositief Buis



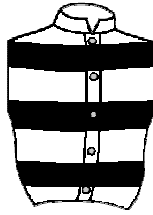
Bande



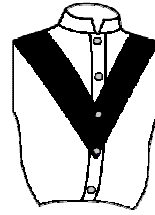
Bretelles



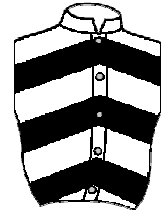
Ceinture



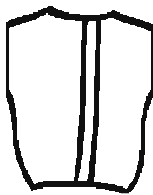
Cerclée



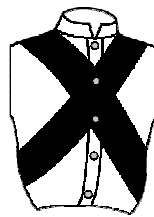
Chevron



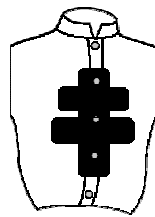
Chevronnée



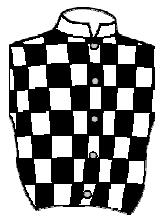
Coutures



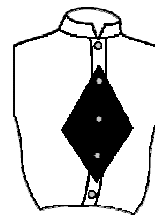
**Croix de
St André**



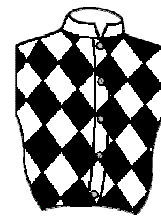
**Croix de
Lorraine**



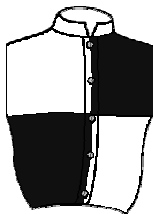
Damier



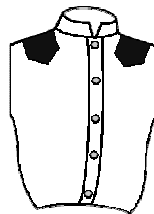
Losange



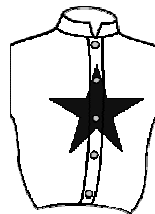
Losanges



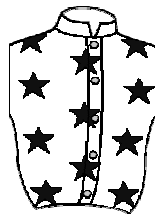
Ecartelée



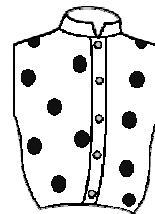
Epaulettes



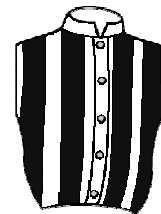
Etoile



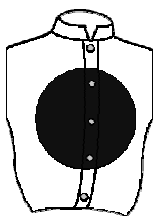
Etoiles



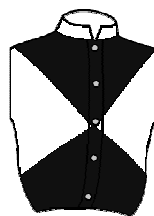
Pois



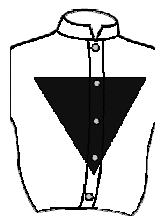
Rayée



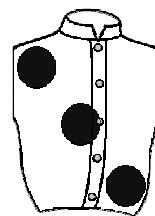
Disque



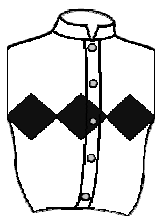
Diabolo



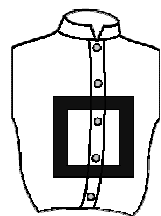
Triangle



Trois Pois



Trois Losanges



Cadre

Dispositif manches – Dispositief mouwen



Brassards



Cerclées



Coutures



Etoiles



Pois



Rayées



Chevronées



Losanges



Damier



Diabolo

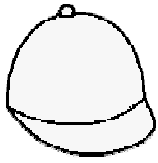


Mi

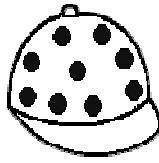


Unies

Dispositif toque – Dispositief pet



Unie



Pois



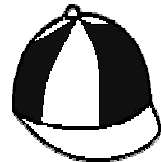
Cerclée



Damier



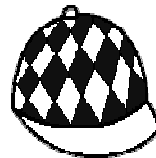
Rayée



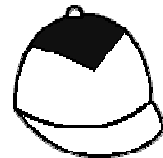
Ecartelée



Etoiles



Losanges



Losange



Etoile